



Professional Manufacturer of Inspection Cameras



Scan for
contact info:

ALL PRODUCTS, PRODUCT SPECIFICATIONS AND
DATA ARE SUBJECT TO CHANGE WITHOUT NOTICE TO
IMPROVE RELIABILITY, FUNCTION OR DESIGN OR
OTHERWISE

TVBTECH CO.,LTD.

ADD: A702, ZhiHuiChuangXinZhongXin, QianJin Second Road, Bao'an, Shenzhen, China

TEL: +86-158 89631708

E-mail: sales@tvbtech.com

web: www.tvbtech.com

www.draincamera.com



www.tvbtech.com
www.draincamera.com



Industrial Video Inspection Cameras

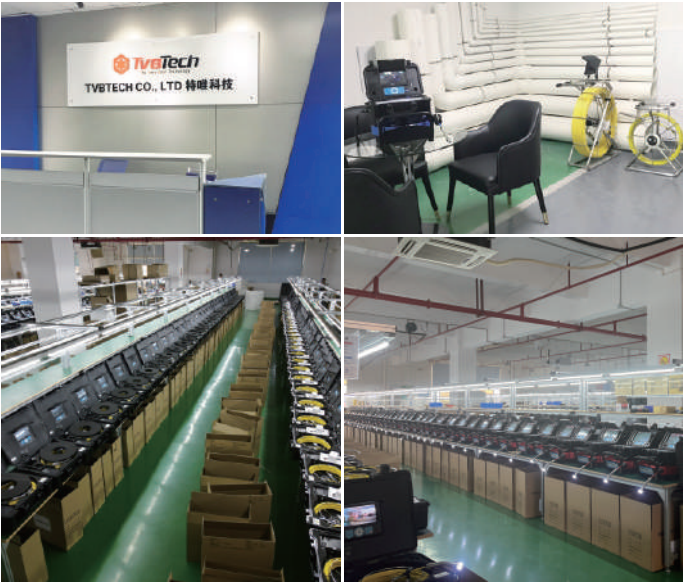
- Pipe/Drain Inspection Cameras
- Pipe Locator(512Hz/640Hz/33kHz)
- Video Borescopes
- Cavity Wall Inspection Camera

ABOUT US

Founded in 2008, TVBTech has grown into a globally recognized leader in pipe inspection camera technology. As a premier manufacturer based in China, we specialize in the design, development, and production of advanced pipe inspection solutions. Our cutting-edge cameras deliver precise, efficient pipeline assessments, enabling the detection of flaws, blockages, and other critical issues across diverse industries-including municipal infrastructure, industrial maintenance, and oil & gas pipelines.

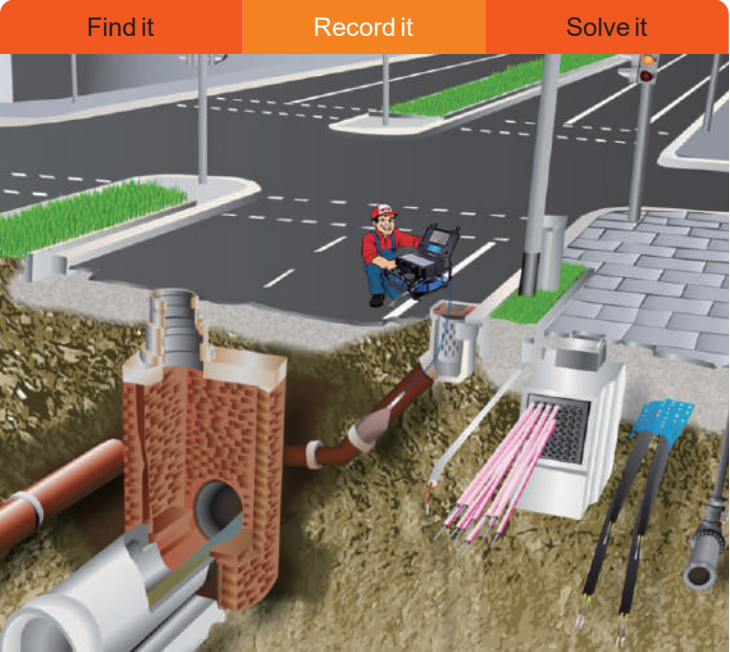
Over the years, TVBTech has built a strong reputation for excellence, combining superior product quality with unmatched customer service. Our commitment to innovation, reliability, and continuous improvement has earned the trust of international markets. Today, a vast network of satisfied clients relies on our technology to enhance operational efficiency and ensure peak pipeline performance.

Looking ahead, we remain dedicated to pioneering the future of pipe inspection technology. Our team of skilled engineers and industry experts relentlessly pursues breakthroughs, developing smarter features and solutions to meet the evolving demands of the field.



Various Applications of Pipe Inspection Cameras

- 1.Plumbing/ Construction/ Survey Instrument.
- 2.Drain Sewer Cleaning.
- 3.Air Duct Cleaing.
- 4.Trenchless Pipe Relining Industry.
- 5.Telecom Industry.



HOW to Choose a Pipe Inspection Camera?

Pipe inspection cameras are widely used by plumbers, contractors, engineers, home inspectors, municipal workers and other professionals for inspecting areas that are hard to see.

To choose a camera you need to KNOW

- 1.What sized pipes/ sewers/ drains you are going to use it in? this is to decide the pipe camera's diameter of camera head, length and size of rod cable, amount of light, etc.
- 2.Do you need optional features such as built-in Sonde, on-screen distance counter, self-leveling, Keyboard text input,etc. ?
- 3.How available is service after sale? TvbtTech has been very professional and efficient in not only producing cameras but also providing high quality after-sale services.



A Glance of TvbtTech Pipe Inspection Cameras

	3599F / FB Dia. of Cam: Φ14,18 or 23mm Length of Cable: 20-40m Thickness of Cable: Φ4.8, 5.2 or 6.8mm Fits for Pipe DN: Φ20-150mm Standard Features: Meter counter, Keyboard Optional Features: 512Hz Sonde, Self-Leveling 33Khz Transmitter		3499F / FB Dia. of Cam: Φ14,18 or 23mm Length of Cable: 20-40m Thickness of Cable: Φ4.8, 5.2 or 6.8mm Fits for Pipe DN: Φ20-150mm Standard Features: Meter counter, Keyboard Optional Features: 512Hz Sonde, Self-Leveling 10.1" LCD Screen, 33Khz Transmitter
	3399F / FB Dia. of Cam: Φ38mm Length of Cable: 40-60m Thickness of Cable: Φ6.8mm Fits for Pipe DN: Φ50-300mm Standard Features: Meter counter, Self-Leveling, Keyboard Optional Features: 512Hz Sonde 10.1" LCD Screen 33Khz Transmitter		3299F / FB Dia. of Cam: Φ38mm Length of Cable: 60-120m Thickness of Cable: Φ9mm Fits for Pipe DN: Φ50-300mm Standard Features: Meter counter, Self-Leveling Optional Features: 512Hz Sonde 10.1" LCD Screen 33Khz Transmitter
	3199F-14mm Dia. of Cam: Φ14mm Length of Cable: 20-40m Thickness of Cable: Φ4.8mm Fits for Pipe DN: Φ20-100mm Standard Features: Meter counter Optional Features: Keyboard,512Hz Sonde 10.1" LCD Screen, 18mm camera head		3199F-23mm Dia. of Cam: Φ23mm Length of Cable: 20-40m Thickness of Cable: Φ5.2mm Fits for Pipe DN: Φ30-150mm Standard Features: N/A Optional Features: Meter counter, 512Hz Sonde, Self-Leveling, Keyboard, 10.1" LCD Screen, 33Khz Transmitter

SEE PRICE LIST FOR COMPLETE LIST OF DIFFERENT OPTIONS, PART NUMBERS, SPARE PARTS AND PRICES.
ALL PRODUCTS, PRODUCT SPECIFICATIONS AND DATA ARE SUBJECT TO CHANGE WITHOUT NOTICE TO IMPROVE RELIABILITY, FUNCTION OR DESIGN OR OTHERWISE



Fully Rainproof Industrial Video Drain/
Pipe Inspection Inspection Camera

1080P
FULL HD



Model No.3599F&FB

Camera Size	Rod Cable	White LEDs
Φ23mm×51mm	Φ6.8mm	15pcs
For Pipe Dia	LCD Size	Built-in Battery
30-150mm	10.1 "	Last 6 Hours
Resolution	Meter Counter	Text Input
1080P Full HD	Built-in	Keyboard

Optional Functions



Specifications

Camera Head	
Sensor	1/3" CMOS
Resolution	AHD 1920x1080
View Angle	130° wide angle
Focus Distance	10cm (approx)
Depth-of-Field	20cm (approx)
Front Lens	Sapphire Glass
Camera Size	Φ23mmx51cm (Main Body)
Camera Length	155mm (Total)
Water-Proof	20m Water (Camera fix on Cable)
Shell Material	304# Stainless Steel
Lighting	Built-in 15xLED (White)

Cable Reel	
Meter Counter	Built-in
Material	Fiberglass Rod Cable
Wheel	Stainless Steel Wheel
Cable Length	20m, 30m or 40m Optional
Connector	Gold Touch-Point Connector
Wheel Diameter	33cm
Cable Diameter	6.8mm (0.26")
Meter and Feet	Meter/ft/Off



Compact, Rugged and
Waterproof Design



Convenient
Transportation



Easy to Carry



Removable Control
box with keyboard



Fully Rainproof Industrial Video Drain/
Pipe Inspection Inspection Camera

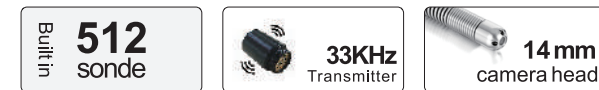
1080P
FULL HD



Model No.3599F-18mm

Camera Size	Rod Cable	White LEDs
Φ18mm×29mm	Φ4.8mm	9pcs
For Pipe Dia	LCD Size	Built-in Battery
20-80mm	10.1 "	Last 6 Hours
Resolution	Meter Counter	Text Input
1080P Full HD	Built-in	Keyboard

Optional Functions



Specifications

Camera Head	
Sensor	1/3" CMOS
Resolution	AHD 1920×1080
View Angle	130°(diagonal)
Focus Distance	15cm (approx)
Depth-of-Field	20cm (approx)
Front Lens	Sapphire Glass
Camera Size	Φ18mm×29mm (Main body)
Camera Length	135mm (Total)
Water-Proof	20m Water (Camera fix on Cable)
Shell Material	304# Stainless Steel
Lighting	Built-in 9×LED (White)

Cable Reel	
Meter Counter	Built-in
Material	Fiberglass Rod Cable
Wheel	Stainless Steel Wheel
Cable Length	20m, 30m, 40m or 60m Optional
Connector	Gold Touch-Point Connector
Wheel Diameter	33cm
Cable Diameter	4.8mm (0.19")
Meter and Feet	Meter/ft/Off



Compact, Rugged and
Waterproof Design



Convenient
Transportation



Easy to Carry



Removable Control
box with keyboard

Mini Drain / Pipe Inspection Camera System with 20m, 30m, 40m or 60m (66, 98,131 or 197ft) Cable



Weight:11KG

Model No.3499F-14mm

Camera Size	Rod Cable	White LEDs
Φ14mm×21mm	Φ4.8mm	4pcs
For Pipe Dia	LCD Size	Built-in Battery
20-80mm	7 "	Last 6 Hours
Resolution	Meter Counter	Text Input
648x488	Built-in	Keyboard

Optional Functions

512 sonde	10.1" LCD Screen	18mm 1080P AHD Camera Head
--------------	---------------------	----------------------------------

Specifications

Camera Head	
Sensor	1/4" CMOS
Resolution	648x488 Pixels
View Angle	90° (diagonal)
Focus Distance	6-8cm (approx)
Depth-of-Field	20cm (approx)
Front Lens	Sapphire Glass
Camera Size	Φ14mm×21mm (Main body)
Camera Length	125mm (Total)
Water-Proof	10m Water (Camera fix on Cable)
Shell Material	304# Stainless Steel
Lighting	Built-in 4×LED (White)

Cable Reel	
Meter Counter	Built-in
Material	Fiberglass Rod Cable
Wheel	Stainless Steel Wheel
Cable Length	20,30,40 or 60m Optional
Connector	Gold Touch-Point Connector
Wheel Diameter	33cm
Cable Diameter	4.8mm (0.19")
Meter and Feet	Meter/ft/Off

LCD Display and DVR	
LCD Resolution	1024x600 pixels
Video Resolution	CVBS D1
Video Compress	High Compression / H.264
Recording	Video and audio recording
Picture	Picture shot function
LCD Size	7" or 10.1"
Menu Language	14 Languages
Panel Control	Any functions through buttons
External Memory	C10 SD Card (Max. 64GB)
Battery Capacity	7.2V 6400mAh Li-ion Battery



Compact, Rugged and Waterproof Design



Convenient Transportation



Easy to Carry



Removable Control box with keyboard

Top Seller Drain / Pipe Inspection Camera System with 20m, 30m or 40m (66, 98 or 131ft) Cable



1080P
FULL HD

Weight:11.8KG

Model No. 3499F&FB

Camera Size	Rod Cable	White LEDs
Φ23mm×51mm	Φ6.8mm	15pcs
For Pipe Dia	LCD Size	Built-in Battery
30-150mm	7 "	Last 6 Hours
Resolution	Meter Counter	Text Input
1080P Full HD	Built-in	Keyboard

Optional Functions

10.1" LCD Screen	512 sonde	self-leveling	38mm camera head	33KHz Transmitter	5.2mm blue rod
---------------------	--------------	---------------	---------------------	----------------------	-------------------

Specifications

Camera Head	
Sensor	1/3" CMOS
Resolution	AHD 1920×1080
View Angle	130° (diagonal)
Focus Distance	15cm (approx)
Depth-of-Field	20cm (approx)
Front Lens	Sapphire Glass
Camera Size	Φ23mm×51mm(Main body)
Camera Length	155mm (Total)
Water-Proof	20m Water (Camera fix on Cable)
Shell Material	304# Stainless Steel
Lighting	Built-in 15×LED (White)
Illumination	70 lm Max

Cable Reel	
Meter Counter	Built-in
Material	Fiberglass Rod Cable
Wheel	Stainless Steel Wheel
Cable Length	20,30 or 40m Optional
Connector	Gold Touch-Point Connector
Wheel Diameter	33cm
Cable Diameter	6.8mm (0.26")
Meter and Feet	Meter/ft/Off

LCD Display and DVR	
LCD Resolution	1024x600 pixels
Video Resolution	AHD 1080P
Video Compress	High Compression / H.264
Recording	Video and audio recording
Picture	Picture shot function
LCD Size	7" or 10.1"
Menu Language	14 Languages
Panel Control	Any functions through buttons
External Memory	C10 SD Card (Max. 64GB)
Battery Capacity	7.2V 6400mAh Li-ion Battery



Compact, Rugged and Waterproof Design



Convenient Transportation



Easy to Carry



Removable Control box with keyboard

Compact Pipe Inspection Camera with **Dual** Cameras / Cables

Model No.3499F-Dual



One compact system with 2 cable wheels and 2 camera heads. Now it's possible to operate both 23mm and 14mm camera heads on a same system.

Typical Configurations:

- 5.2mm rod cable with 23mm head + 4.8mm rod cable with 14mm camera head
- 6.8mm rod cable with 23mm head + 4.8mm rod cable with 14mm camera head



With wheels and retractable handle



Handheld Handle



Roll Type Cable Guide



Built in 512Hz Sonde & Self-leveling(optional)



Built in 512Hz sonde (optional)

Mini Classic Drain / Pipe Inspection Camera with 20m, 30m or 40m (66, 98 or 131ft) Cable

Model No.3199F-14mm



Camera Size	Rod Cable	White LEDs
Φ14mm×21mm	Φ4.8mm	4pcs
For Pipe Dia	LCD Size	Built-in Battery
20-80mm	7 "	Last 6 Hours
Resolution	Meter Counter	Text Input
648x488	Built-in	Keyboard

Optional Functions

Built In
512
sonde

10.1"
LCD
Screen

18mm
1080P AHD
Camera Head

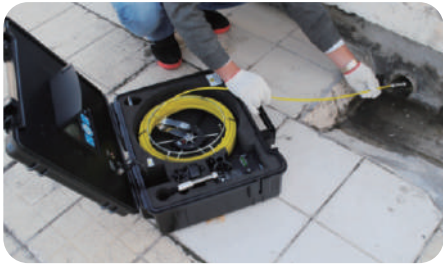
Keyboard

Specifications

Camera Head	
Sensor	1/4" CMOS
Resolution	648x488 Pixels
View Angle	90° (diagonal)
Focus Distance	6-8cm (approx)
Depth-of-Field	20cm (approx)
Front Lens	Sapphire Glass
Camera Size	Φ14mm×21mm (Main body)
Camera Length	125mm (Total)
Water-Proof	10m Water (Camera fix on Cable)
Shell Material	304# Stainless Steel
Lighting	Built-in 4×LED (White)

LCD Display and DVR	
LCD Resolution	1024x600 pixels
Video Resolution	CVBS D1
Video Compress	High Compression / H.264
Recording	Video and audio recording
Picture	Picture shot function
LCD Size	7" or 10.1"
Menu Language	14 Languages
Panel Control	Any functions through buttons
External Memory	C10 SD Card (Max. 64GB)
Battery Capacity	7.2V 6400mAh Li-ion Battery

Cable Reel	
Meter Counter	Built-in
Material	Fiberglass Rod Cable
Wheel	Stainless Steel Wheel
Cable Length	20,30,40m Optional
Connector	Gold Touch-Point Connector
Wheel Diameter	33cm
Cable Diameter	4.8mm (0.19")
Meter and Feet	Meter/ft/Off



Passing through 90° bends in a DN 30mm pipe



Highly flexible Φ14mm camera head



With Ball Guide (dia. 28mm)

Classic Drain / Pipe Inspection Camera with 20m, 30m or 40m (66, 98 or 131ft) Cable



1080P
FULL HD

Model No.3199F-23mm

Camera Size	Rod Cable	White LEDs
Φ23mm×51mm	Φ5.2mm	15pcs
For Pipe Dia	LCD Size	Built-in Battery
30-150mm	7 "	Last 6 Hours
Resolution	Recording	Cable Length
1080P Full HD	SD Card	20-40m

Optional Functions



Specifications

Camera Head	
Sensor	1/3" CMOS
Resolution	AHD 1920×1080
View Angle	130° (diagonal)
Focus Distance	15cm (approx)
Depth-of-Field	20cm (approx)
Front Lens	Sapphire Glass
Camera Size	Φ23mm×51mm (Main body)
Camera Length	155mm (Total)
Water-Proof	20m Water (Camera fix on Cable)
Shell Material	304# Stainless Steel
Lighting	Built-in 15×LED (White)
Illumination	70 lm Max

LCD Display and DVR	
LCD Resolution	1024x600 pixels
Video Resolution	AHD 1080P
Video Compress	High Compression / H.264
Recording	Video and audio recording
Picture	Picture shot function
LCD Size	7" or 10.1"
Menu Language	14 Languages
Panel Control	Any functions through buttons
External Memory	C10 SD Card (Max. 64GB)
Battery Capacity	7.2V 6400mAh Li-ion Battery

Cable Reel	
Meter Counter	Built-in
Material	Fiberglass Rod Cable
Wheel	Stainless Steel Wheel
Cable Length	20,30 or 40m Optional
Connector	Gold Touch-Point Connector
Wheel Diameter	33cm
Cable Diameter	5.2mm (0.2")
Meter and Feet	Meter/ft/Off



Passing through
4x90° bends
in 45mm(1.8")pipe



Camera skids
46mm &
80mm(1.8&3.15")



Cable reel is
mounted and
rotatable
in the case

Medium Drain / Pipe Inspection Camera System with 40m, 50m or 60m (131, 164 or 197ft) Cable



Model No.3399F/FB

Camera Size	Rod Cable	White LEDs
Φ38mm×81mm	Φ6.8mm	12pcs
For Pipe Dia	LCD Size	Resolution
45-300mm	7 "	480 TV-Line
Self-leveling	Meter Counter	Text Input
Standard Feature	Built-in	Keyboard

Optional Functions



Mini Roller Skid, Dia.
70mm/2.76" for pipe dia.
75-120mm(2.95-4.72")



Universal Roller Skid,
Dia. 120mm(Min.) 250mm
(Max.) (4.72-9.84")



Keyboard for Text
Input



Stand Horizontally

Specifications

Camera Head	
Material	#304 Stainless Steel
Dimension	Φ38mm×81mm (Main body)
sensor	1/3" CMOS,480 TV Lines
View Angle	120°
Focal Distance	12-120cm
LEDs	12pcs high light LEDs
Waterproof	Max.20m (65') under water

Push Cable	
Cable Diameter	6.8mm
Cable Material	Fiberglass
Available Length	40/50/60m(131/164/197ft)
Wheel Material	Stainless Steel

Monitor	
LCD	7" 16:9 high definition color LCD monitor
Resolution	1024x600 pixels
Encoding	H. 264
Storage	SD Card slot to store still images or videos
Sound	Local audio recording
Battery	Built-in rechargeable battery
Work time	4-5 hours
Charge time	6-7 hours
Menu Language	English, German, French, Spanish, Italian, Chinese, Japanese, Russian, Portuguese.



3399FB with monitor and keyboard mounted in a rain resistant box



Large Drain / Pipe Inspection Camera System with 60-120m (195-394ft) Cable

Model No.3299F/FB

Camera Size Φ38mm×81mm	Rod Cable Φ9mm	White LEDs 12pcs
For Pipe Dia 45-300mm	LCD Size 7 "	Built-in Battery Last 6 Hours
Self-leveling Standard Feature	Meter Counter Built-in	Text Input Keyboard

Optional Functions



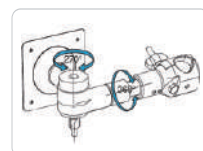
Mini Roller Skid, Dia. 70mm/2.76" for pipe dia. 75-120mm(2.95-4.72")



Universal Roller Skid, Dia. 120mm(Min.) 250mm (Max.) (4.72-9.84")



U-shape wheel Extension handle for taller operators



Universal Bracket to install monitor on top or side of the wheel

Specifications

Camera Head	
Material	#304 Stainless Steel
Dimension	Φ38mmx81mm (Main body)
sensor	1/3" CMOS, 480 TV-Lines
View Angle	120°
Focal Distance	12-120cm (4.71-47")
LEDs	12pcs high light LEDs
Waterproof	Max.20m (65') under water

Push Cable	
Cable Diameter	9mm
Cable Material	Fiberglass
Available Length	60/80/100/120m (197/262/328/394ft)
Wheel Material	Stainless Steel

Monitor	
LCD	7" 16:9 high definition color LCD monitor
Resolution	1024x600 pixels R.G.B
Encoding	H.264
Storage	SD Card slot to store still images or videos
Sound	Local audio recording
Battery	Built-in rechargeable battery
Work time	4-5 hours
Charge time	6-7 hours
Menu Language	English, German, French, Spanish, Italian, Chinese, Japanese, Russian, Portuguese.



3299FB with monitor and keyboard mounted in a rain resistant

Industrial Pan&Tilt Video Drain / Pipe Inspection Camera



Model No.3388PT

Camera Size Φ28mm	Rod Cable Φ8mm	White LEDs 2pcs
For Pipe Dia 40-100mm	LCD Size 10 "	Self-leveling Standard Feature
Swing Angle 180°	Rotating Angle 360°	512hz Sonde Built-in

2 skids, Φ50mm, Φ90mm



Specifications

Camera Head	
Material	Aluminium
Camera Diameter	Φ28mm
Sensor	1/3 Inch CMOS
Camera swing angle	180°
Camera rotating angle	360°
Roller Skids	Φ50mm, Φ90mm
Camera head glass material	Sapphire glass
LEDs	2pcs high light LEDs
Waterproof	Max. 10m under water
512Hz	Yes
Auto Self-leveling	Yes

LCD Display and DVR	
Cable Diameter	8mm
Cable Material	Fiberglass
Available length	60m
Wheel material	Stainless steel

Monitor	
LCD Resolution	600x800pixel
Video Compress	MPEG-4
Recording	Video and audio recording
Picture	Picture shot function
LCD Size	10 inch
Menu Language	8 Languages (English, German, French, Italian, Spanish, Portuguese, Russian, Dutch)
Panel Control	Any functions through buttons
External Memory	USB Stick/SD Card (Max 32GB)



3688 with Φ56mm Pan & Tilt Camera Head and 60~120m Fiberglass Cable

Model No. **TPL200**

Pipe Locator (512Hz/640Hz/33kHz)

The wireless pipe locator is a scanner used to find the position of the camera head (with 512Hz/640Hz/33kHz transmitter inside). It is a powerful tool that helps you to locate the exact place of the problems in a pipe.

Features:

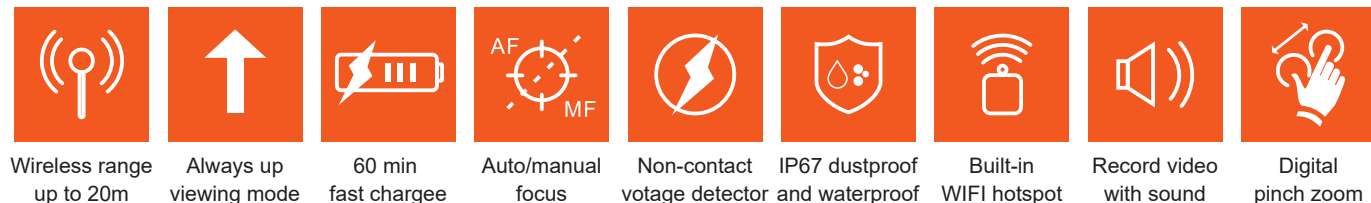
Distance: 10 meters (open area)
Frequencies: 512Hz/640Hz/33kHz
Power Line Locate: 50/60Hz Power Line
Radio Frequencies: 250Hz~40kHz
Percentage Signal Level: On Screen
Signal Level Output: Speaker or headphone
Sensitivity Setting: 0~100
Speaker Level: Adjustable
Power supply: Lithium Battery 7.4V 2200mAh (Build-in)
Working time: 10 hours
Size: 690mm×240mm×110mm
Weight: 2KG
Ingress Protection: IP65
Operation Temperature: -10~50°C/+14~+122°F



Model No. **TV90W**

Multi-Purpose Mountable WiFi Video Borescope with 1m Telescopic Pole

This is an innovative WiFi inspection camera that can be mounted on different rods and poles to get extended reach. It's built-in WiFi hotspot for using on both iOS and Android devices. It's perfect for a wide range of applications including locating electrical wiring, building inspections, home inspection, for aviation and vehicle applications and even for search and rescue missions.



Wireless range up to 20m Always up viewing mode 60 min fast charge Auto/manual focus Non-contact voltage detector IP67 dustproof and waterproof Built-in WiFi hotspot Record video with sound Digital pinch zoom

Model No. **HD5808AL**

5.5mm 720P HD 2-Way Articulating Borescope with Flexible Tube

Features:

Camera Head: 5.5mm, 640x480 pixels, 4 white LEDs
Tube: Flexible, 1m length
Articulation: 2 way, 300 Degrees
5" monitor with SD card recording/still image capture. With silicon protective cover



Model No. **4908AL**

Cavity Wall Inspection Camera (Upgraded Version with Sturdy 5" LCD)

Features:

- 2.4Ghz wireless transmission between camera and monitor
- Mini stainless steel insertion tube, dia.: 9mm
- Tube length 300mm
- Side view camera head, 380TVL
- 2 high intensity LEDs on camera head, providing light up to 1.5 meters
- Video out function
- 5" TFT-LCD wireless monitor with SD card recording (Max. SD card: 32GB)
- Waterproof level: IP67 (camera tube only)
- Built-in Rechargeable Li-battery for both camera and monitor

Other Versions:

HD4908

Wired with 3.0" LCD, powered by 4xAAA batteries

HD4908-WiFi:

WiFi Version, APP operated supports both iOS and Android Phones



This is a side view rigid inspection camera that is specially designed for cavity wall inspection, wall tie and dry rot inspection, inspection of spaces under floors, above ceilings and behind panels and ducts, and many more where a rigid side view endoscope is required.