



Professional Manufacturer of Inspection Cameras

Professional Manufacturer
of Inspection Cameras



Industrial Video Inspection Cameras

- Pipe/Drain Inspection Cameras
- Air Duct Cleaning Inspection Camera
- Articulating Video Borescopes
- Cavity Wall Inspection Camera

TVBTECH CO.,LTD.

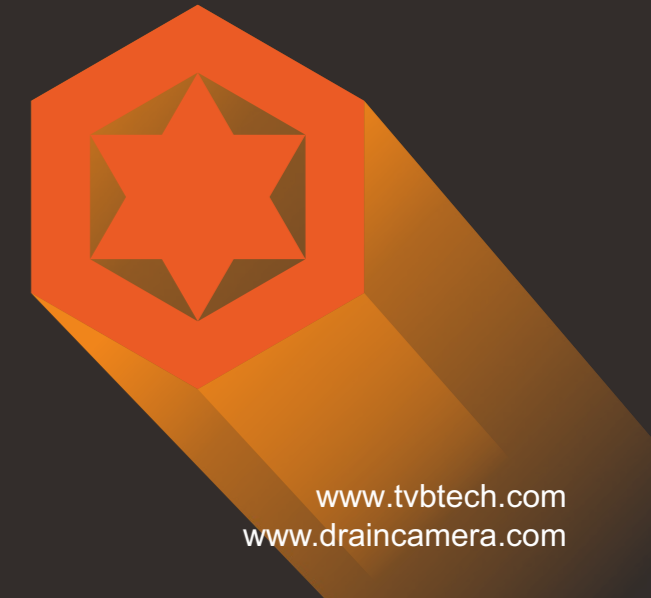
ADD:A702, ZhiHuiChuangXinZhongXin, QianJin Second Road, Bao'an, Shenzhen, China
 TEL/FAX:+86-755-26587735
 E-mail:sales@tvbtech.com
 Post Code:518102
 web:www.tvbtech.com
 www.draincamera.com



Scan for
contact info:



ALL PRODUCTS, PRODUCT SPECIFICATIONS AND DATA
 ARE SUBJECT TO CHANGE WITHOUT NOTICE TO
 IMPROVE RELIABILITY, FUNCTION OR DESIGN OR
 OTHERWISE



www.tvbtech.com
 www.draincamera.com

ABOUT US

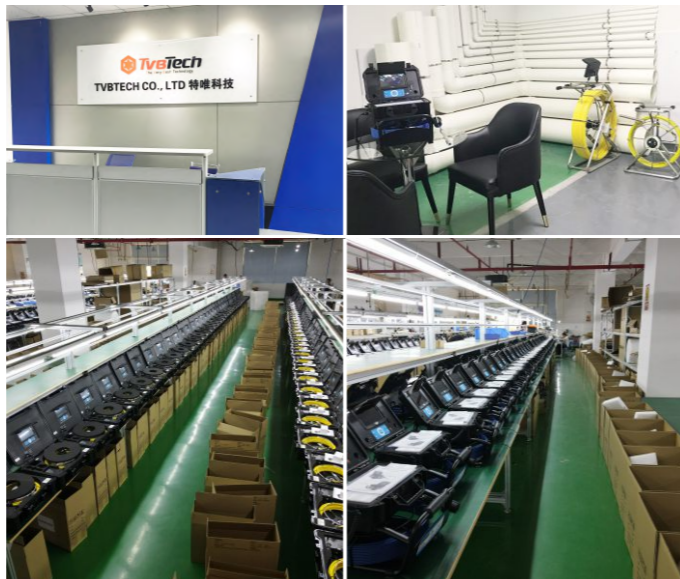
Established in 2008, TvbTech Co., Ltd. is specialized in designing, R&D, manufacturing and exporting of Inspection cameras. Our main products are pipe inspection cameras, camera locators, articulating video borescopes, etc. Everything we produce is in compliance with all FCC, CE, and RoHS & WEEE Directives.

As the leading manufacturer in this industry in Mainland China, we operate in a 2500 m² factory located in Shenzhen. We aim to become a first-class supplier of pipe inspection cameras with world renowned quality and stability products, which strives us to keep investing and focusing on product quality control and innovative product development.

TvbTech has also already been recognized as a strategic partner of many OEM/ODM businesses. We have highly experienced team to work on your OEM/ODM projects. Our experience and splendid service have won us good business relationships with many international buyers and suppliers.

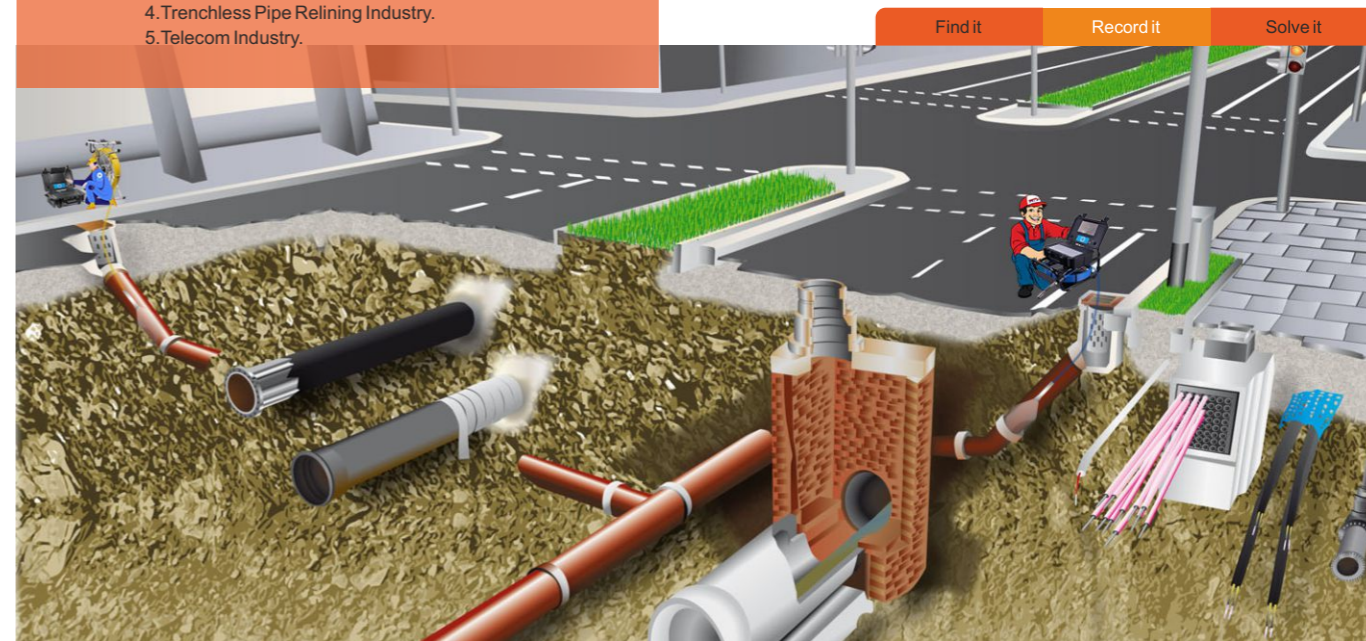
Our products have been sold to many countries across the world including Europe, North America, Japan, Korea, Australia, etc. We welcome you to become our next reseller, or agent in your country.

Feel free to contact us if you want a quote.



Various Applications of Pipe Inspection Cameras

- 1.Plumbing/ Construction/ Survey Instrument.
- 2.Drain Sewer Cleaning.
- 3.Air Duct Cleaing.
- 4.Trenchless Pipe Relining Industry.
- 5.Telecom Industry.



HOW to Choose a Pipe Inspection Camera?

Pipe inspection cameras are widely used by plumbers, contractors, engineers, home inspectors, municipal workers and other professionals for inspecting areas that are hard to see.

To choose a camera you need to **KNOW**

1. What sized pipes/ sewers/ drains you are going to use it in? this is to decide the pipe camera's diameter of camera head, length and size of rod cable, amount of light, etc.
2. Do you need optional features such as built-in Sonde, on-screen distance counter, self-leveling, Keyboard text input, etc. ?
3. How available is service after sale? TvbTech has been very professional and efficient in not only producing cameras but also providing high quality after-sale services.



A Glance of TvbTech Pipe Inspection Cameras



3499F / FB

Dia. of Cam: Φ 14 or 23mm
 Length of Cable: 20-40m
 Thickness of Cable: Φ 4.8, 5.2 or 6.8mm
 Fits for Pipe DN: Φ 30-150mm
 Standard Features: Meter counter, Keyboard
 Optional Features: 512Hz Sonde, Self-Leveling



3199F-14mm

Dia. of Cam: Φ 14mm
 Length of Cable: 20-40m
 Thickness of Cable: Φ 4.8mm
 Fits for Pipe DN: Φ 20-100mm
 Standard Features: Meter counter
 Optional Features: Keyboard



3199F-23mm

Dia. of Cam: Φ 23mm
 Length of Cable: 20-40m
 Thickness of Cable: Φ 5.2mm
 Fits for Pipe DN: Φ 30-150mm
 Standard Features: N/A
 Optional Features: Meter counter, 512Hz Sonde, Self-Leveling, Keyboard



3399F / FB

Dia. of Cam: Φ 38mm
 Length of Cable: 40-60m
 Thickness of Cable: Φ 6.8mm
 Fits for Pipe DN: Φ 100-300mm
 Standard Features: Meter counter, Self-Leveling, Keyboard
 Optional Features: 512Hz Sonde



3299F / FB

Dia. of Cam: Φ 38mm
 Length of Cable: 60-120m
 Thickness of Cable: Φ 9mm
 Fits for Pipe DN: Φ 150-300mm
 Standard Features: Meter counter, Self-Leveling
 Optional Features: 512Hz Sonde



See price list for complete list of different options, part numbers, spare parts and prices.

ALL PRODUCTS, PRODUCT SPECIFICATIONS AND DATA ARE SUBJECT TO CHANGE WITHOUT NOTICE TO IMPROVE RELIABILITY, FUNCTION OR DESIGN OR OTHERWISE

optional choice:
10.1" LCD Screen






3499F -23mm

**23mm Drain/pipe Inspection Camera System
with 20m, 30m or 40m (66, 98 or 131ft) cable**

(3499F -14mm: 14mm Camera System with 20-40m red color rod cable)

- 1/3 inch CMOS camera, 120° wide view angle
- stainless steel short camera head, IP68 water proof level
- Sapphire glass lens cover, 15 white LEDs
- Diameter of camera:23mm, suitable for pipe dia,25-150mm(1"-5.9")
- 20-40m fiberglass rod cable with stainless steel reel
- One touch record/still images button
- 7" TFT LCD monitor with DVR (optional choice: 10.1" LCD Screen)
- Rechargeable High capacity Li-battery for 5 hours continuous working
- Compact, Rugged and waterproof design

 ø23mm(0.9")	 20/30/40m	CMOS 1/3"	 Li-battery
512 sonde	RECORD	7" COLOR DISPLAY	16:9 Wide Screen



Compact, Rugged and Waterproof Design



Convenient Transportation



Easy to Carry



Removable Control box with keyboard

Specifications

Camera Head

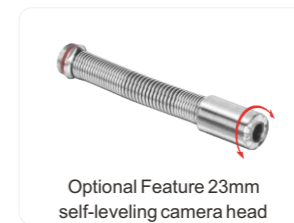
Sensor	1/3" CMOS
Head Dimention	23mm(dia.)x45mm(Length)
Camera Material	304# Stainless Steel
View Angle	120°wide angle
Lens Cover	Sapphire glass
Leds	15 High Bright White LEDs
Water Proof	IP68/10m Under Water
Focus Distance	20cm(Approx)

LCD Display and DVR

LCD Resolution	1024x600 pixels
Video Compress	H.264
Recording	Video and audio recording
Picture	Picture shot function
LCD Size	7 inch
Menu Language	9 Languages
Panel Control	Any functions through buttons
External Memory	C10 SD Card (Max. 64GB)

Cable Reel

Material	Fiberglass Rod Cable
Wheel	Stainless Steel Wheel
Cable Length	20,30 or 40 Optional
Connector	Gold Touch-Point Connector
Wheel Diameter	33cm
Cable Diameter	5.2mm(0.2")



Optional Feature 23mm self-leveling camera head



Optional Feature Built in 512Hz Sonde



Optional Feature Built in both 512Hz Sonde & Self-leveling



optional choice:
10.1" LCD Screen




3499FB

**Drain/pipe Inspection Camera System
with 20m, 30m or 40m (66, 98 or 131ft) cable**

- 1/3 inch CMOS camera, 120° wide view angle
- stainless steel short camera head, IP68 water proof level
- Sapphire glass lens cover, 15 white LEDs
- Diameter of camera:23mm, suitable for pipe dia,25-200mm
- 20-40m fiberglass rod cable with stainless steel reel
- One touch record/still images button
- 7" TFT LCD monitor with DVR (optional choice:10.1" LCD Screen)
- Rechargeable High capacity Li-battery for 5 hours continuous working
- Compact, Rugged and waterproof design

Φ6.8mm

Cable diameter: 6.8mm with more pushing power

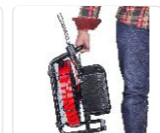
 Φ23mm(0.9")	 20/30m	CMOS 1/3"	 Li-battery
512 sonde	RECORD	7" COLOR DISPLAY	16:9 Wide Screen



Compact, Rugged and Waterproof Design



Convenient Transportation



Easy to Carry



Removable Control box with keyboard

Specifications

Camera Head

Sensor	1/3" CMOS
Head Dimention	23mm(dia.)x45mm(Length)
Camera Material	304# Stainless Steel
View Angle	120°wide angle
Lens Cover	Sapphire glass
Leds	15 High Bright White LEDs
Water Proof	IP68/10m Under Water
Focus Distance	20cm(Approx)

LCD Display and DVR

LCD Resolution	1024x600 pixels
Video Compress	H.264
Recording	Video and audio recording
Picture	Picture shot function
LCD Size	7 inch
Menu Language	9 Languages
Panel Control	Any functions through buttons
External Memory	C10 SD Card (Max. 64GB)

Cable Reel

Material	Fiberglass Rod Cable
Wheel	Stainless Steel Wheel
Cable Length	20,30 Optional
Connector	Gold Touch-Point Connector
Wheel Diameter	33cm
Cable Diameter	6.8mm(0.27")



Optional Feature 23mm self-leveling camera head



Optional Feature Built in 512Hz Sonde



Optional 38mm camera head instead of 23mm head to have more light

Model No.: 3499F-Dual

Compact Pipe Inspection Camera with **Dual** Cameras/Cables



optional choice:
10.1" LCD Screen

NEW

One compact system with 2 cable wheels and 2 camera heads. Now it's possible to operate both 23mm and 14mm camera heads on a same system.

Typical Configurations:

- 5.2mm rod cable with 23mm head + 4.8mm rod cable with 14mm camera head
- 6.8mm rod cable with 23mm head + 4.8mm rod cable with 14mm camera head



Handheld Handle



Roll Type Cable Guide



Built in 512Hz Sonde & Self-leveling(optional)



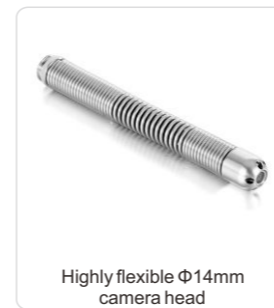
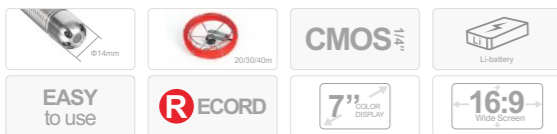
Built in 512Hz sonde (optional)



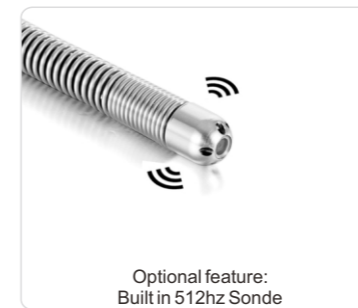
3199F-14mm

14mm Drain / Pipe Inspection Camera with 20m, 30m or 40m (66, 98 or 131ft) cable

- 1/4" CMOS camera, 90° vision angle, 720H x 576V pixels
- Camera Size Φ 14mmx126mm(without spring)
- Sapphire glass lens cover, 4 white LEDs
- Diameter of camera: 14mm, Focus Distance 10cm (approx)
- Water proof level, 10m underwater (camera fix on cable)
- Push cable dia. 4.8mm
- with distance counter feature
- 7" LCD color monitor
- SD Card slot to store still pictures or record videos
- One push record button
- LED brightness control buttons
- Rechargeable battery lasts up to 8 hours
- 20m, 30m or 40m(66ft, 98ft or 131ft) fiberglass push rod
- Rotatable cable reel mounted in case for convenient operation
- Waterproof ABS suitcase with all parts included



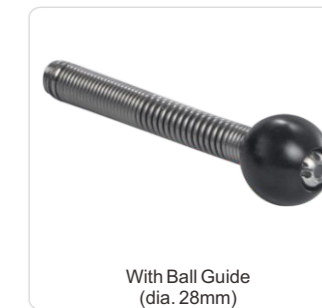
Highly flexible Φ 14mm camera head



Optional feature: Built in 512hz Sonde



Passing through 90° bends in a DN 30mm pipe



With Ball Guide (dia. 28mm)

Specifications

Camera Head

Sensor	CMOS
Head Dimention	14mm(dia.)x14.5mm(Length)
Camera Material	304# Stainless Steel
View Angle	90° wide angle
Lens Cover	Sapphire glass
Leds	4 High Bright White LEDs
Water Proof	IP68/10m Under Water

Cable Reel

Material	Fiberglass Rod Cable
Wheel	Stainless Steel Wheel
Cable Length	20,30 or 40 Optional
Connector	Gold Touch-Point Connector
Rotation	Rotatable in the suitcase
Wheel Diameter	33cm
Cable Diameter	4.8mm

LCD Display and DVR

LCD Resolution	1024x600 pixels
Video Compress	H.264
Recording	Video and audio recording
Picture	Picture shot function
LCD Size	7 inch
Menu Language	9 Languages
Panel Control	Any functions through buttons
External Memory	C10 SD card (Max. 64GB)



3199F-23mm

23mm Drain / Pipe Inspection Camera with 20m, 30m or 40m (66, 98 or 131ft) cable



- 1/3 inch CMOS camera, 120° wide view angle
- stainless steel short camera head, IP68 water proof level
- Sapphire glass lens cover, 15 white LEDs
- Diameter of camera:23mm,suitable for pipe dia, 25-150mm(1"-5.9")
- 20-40m(66-131ft)fiberglass rod cable with stainless reel
- Cable reel rotatable in the case
- One touch record/still images button
- 7" TFT LCD monitor with DVR
- Rechargeable High capacity Li-battery(6600mA) for 8 hours continuous working
- Waterproof ABS suitcase with all parts included
- Optional feature: Meter counter/ 512hz sonde/ self-leveling/ keyboard.



Professional easy to operate 7" monitor



Cable reel is mounted and rotatable in the case



Passing through 4x90° bends in 45mm(1.8")pipe



Camera skids 46mm & 80mm(1.8&3.15")



Φ23mm(0.9")



20/30/40m

CMOS 1/3"



Li-battery

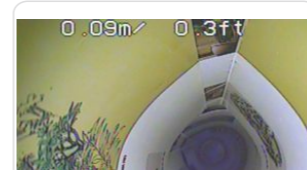
512 sonde



7" COLOR DISPLAY

16:9 Wide Screen

Optional Features & Parts



Meter Distance Counter



Built in 512Hz Sonde



23mm(0.9")self leveling Camera head



14mm(0.55") Camera



38mm(1.5") Camera

Specifications

Camera Head

Sensor	1/3" CMOS
Head Dimention	23mm(dia.)x45mm(Length)
Camera Material	304# Stainless Steel
View Angle	120°wide angle
Lens Cover	Sapphire glass
Leds	12 High Bright White LEDs
Water Proof	IP68/10m Under Water
Focus Distance	20cm(Approx)

Cable Reel

Material	Fiberglass Rod Cable
Wheel	Stainless Steel Wheel
Cable Length	20,30 or 40 Optional
Connector	Gold Touch-Point Connector
Rotation	Rotatable in the suitcase
Wheel Diameter	33cm
Cable Diameter	5.2mm(0.2")

LCD Display and DVR

LCD Resolution	1024x600 pixels
Video Compress	H.264
Recording	Video and audio recording
Picture	Picture shot function
LCD Size	7 inch
Menu Language	9 Languages
Panel Control	Any functions through buttons
External Memory	C10 SD card (Max. 64GB)



3399F

Drain/pipe Inspection Camera System with 40m, 50m or 60m (131, 164 or 197ft) cable

- 1/3" Sony CCD camera, 120° wide vision angle, 752H * 582V pixels
- Camera Size $\Phi 38\text{mm} \times 81\text{mm}$ (main body)
- Two roller skids, mini one at dia. 72mm, another universal skid at dia. 115-250mm
- Sapphire glass lens cover, 12 white LEDs
- Diameter of camera: 38mm, Focus Distance 20cm (approx)
- Water proof level, 20m underwater (camera fix on cable)
- Push cable dia. 6.8mm
- 7" LCD color monitor
- Support SD Card slot to store still pictures or videos
- One push record button
- LED brightness control buttons
- Video image rotate button
- With microphone for audio recording
- Built-in rechargeable battery lasts up to 5 hours
- On-Screen date and time
- With self-leveling feature
- On-screen meter/ft. distance display
- With keyboard for text input
- 40, 50, or 60m fiberglass push rod
- Built-in 512hz sonde (optional)

512
sonde

RECORD

7" COLOR
DISPLAY16:9
Wide ScreenMini Roller Skid, Dia.
70mm/2.76" for pipe dia.
75-120mm(2.95-4.72")Universal Roller Skid,
Dia. 120mm (Min.) 250mm
(Max.) (4.72-9.84")Keyboard for Text
Input

Stand Horizontally

Specifications

Camera Head

Material	#304 Stainless Steel
Dimension	$\Phi 38\text{mm} \times 81\text{mm}$ (Main body)
sensor	1/3" Sony CCD, 480 TV Lines
View Angle	120°
Focal Distance	12-120cm
LEDs	12 pcs high light LEDs
Waterproof	Max. 20m (65') under water

Monitor

LCD	7" 16:9 high definition color LCD monitor
Resolution	1024x600 pixels
Encoding	H. 264
Storage	SD Card slot to store still images or videos
Sound	Local audio recording
Battery	Built-in rechargeable battery
Work time	4-5 hours
Charge time	6-7 hours
Menu Language	English, German, French, Spanish, Italian, Chinese, Japanese, Russian, Portuguese.

Push Cable

Cable dia.	6.8mm
Cable Material	Fiberglass
Available Length	40/50/60m (131/164/197ft)
Wheel Material	Stainless Steel



3399FB

with monitor and keyboard mounted in a rain resistant box



3299F

Drain/pipe Inspection Camera System with 60-120m (195-394ft) cable

- 1/3" Sony CCD camera, 120° wide vision angle, 752H * 582V pixels
- Camera Size $\Phi 38\text{mm} \times 81\text{mm}$ (main body)
- Two roller skids, mini one at dia. 72mm, another universal skid at dia. 115-250mm
- Sapphire glass lens cover, 12 white LEDs
- Diameter of camera: 38mm, Focus Distance 20cm (approx)
- Water proof level, 20m underwater (camera fix on cable)
- Push cable dia. 9mm
- 7" LCD color monitor
- SD Card slot to store still pictures or videos
- One push record button
- LED brightness control buttons
- Video image rotate button
- With microphone for audio recording
- Built-in rechargeable battery lasts up to 5 hours
- On-Screen date and time
- With self-leveling feature
- On-screen meter/ft. distance display
- 60, 80, 100, or 120m fiberglass push rod
- Built-in 512hz sonde (optional)



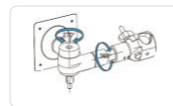
Mini Roller Skid, Dia.
70mm/2.76" for pipe dia.
75-120mm(2.95-4.72")



Universal Roller Skid,
Dia. 120mm (Min.) 250mm
(Max.) (4.72-9.84")



U-shape wheel
Extension handle
for taller operators



Universal Bracket to
install monitor on top
or side of the wheel

Specifications

Camera Head

Material	#304 Stainless Steel
Dimension	$\Phi 38\text{mm} \times 81\text{mm}$ (Main body)
sensor	1/3" Sony CCD, 480 TV Lines
View Angle	120°
Focal Distance	12-120cm (4.71-47")
LEDs	12 pcs high light LEDs
Waterproof	Max. 20m (65') under water

Monitor

LCD	7" 16:9 high definition color LCD monitor
Resolution	800x480 R.G.B
Encoding	H.264
Storage	SD Card slot to store still images or videos
Sound	Local audio recording
Battery	Built-in rechargeable battery
Work time	4-5 hours
Charge time	6-7 hours
Menu Language	English, German, French, Spanish, Italian, Chinese, Japanese, Russian, Portuguese.

Push Cable

Cable dia. 9mm	Fiberglass
Cable Material	60/80/100/120m (197/262/328/394ft)
Available Length	Stainless Steel
Wheel Material	



3299FB

with monitor and keyboard mounted in a rain resistant box



Features

- 1/3 inch CMOS Pan and Tilt camera head, pan 360° tilt 180°
- Stainless steel camera head, IP68 waterproof level
- Sapphire glass lens cover, 2 high light white LEDs
- Diameter of camera: 28 mm
- Two plastic guides for camera head, $\Phi 50\text{mm}$ & $\Phi 90\text{mm}$
- 10" LCD color monitor
- Support USB stick/SD Card slot to store still pictures or videos

Industrial Pan&Tilt Video Drain / Pipe Inspection Camera

Model No. **3388PT**

This is a professional video inspection camera with $\Phi 28\text{mm}$ Pan and Tilt camera head, 10" LCD monitor, $\Phi 8\text{mm}$ rod cable, 60m length, SD card or USB stick recording, etc. It's designed for inspection of sewer, pipe, air ducts, underground cable



Optional camera head: 56mm camera head + spring adapter

- LED brightness control buttons
- With meter counter, feet and meter adjustable
- With microphone for local audio recording
- Rechargeable battery lasts up to 4 hours
- On-Screen date and time, distance counter
- 60m fiberglass, $\phi 8\text{mm}$ push rod
- With auto-leveling function
- With Keyboard for text input (English)
- With 512hz sonde function

Wireless Duct Cleaning Inspection Camera

Model No. **3622F**

This is an innovative air duct blowing equipment with a camera sits just behind the front tip to allow the viewing of the cleaning process. It's designed to blow debris from the register down into the main trunk line. It's a complete system with 7m air tube. 7" monitor and connector to air compressor.

Specifications

Camera Head

Sensor	1/4" CMOS
Diameter	18mm
View Angle	120°
LEDs	12 White LEDs
Waterproof	Max. 10m under water
Focus Distance	20cm (Approx)

Air Tube

Length	7m
Diameter	16mm
Dia. of Forward Head	25mm
Dia. of Camera Housing	38mm
Power Supply	Rechargeable battery
Rear Connector	to standard air compressor

LCD Display and DVR

LCD Resolution	800x480 RGB
Video Encoding	H.264
External Memory	SD memory card up to 32GB
Language	Support 11 languages
Output	Video output port



512Hz Locator

P512R

The 512hz wireless locator is a scanner used to find the position of the camera head (with 512Hz transmitter inside). It is a powerful tool that helps you to locate the exact place of the problems in a pipe.

Main features

Distance: 4m
 Frequency: 512hz
 Power supply: 6*AA
 Current: <100mA
 Operation Mode: NORM/NOISE
 Sensitivity: NEAR/FAR continuous adjustable
 Output intensity: LCD 15 levels
 Size: 100*10*10mm
 Weight: 800g
 Operation Temperature: -10-50°



Optional Features: 512Hz & 33KHz Sonde

1. 512Hz Sonde for 14, 23 & 38mm camera head (built-in)
2. 33KHz Sonde for 23mm & 38mm camera head (external adapter)



5.5mm 720P HD 2-Way Articulating Borescope with Flexible Tube

HD5806AL

Features

Camera Head: 5.5mm, 640x480 pixels, 4 white LEDs
 Tube: Flexible, 1m length
 Articulation: 2 way, 300 Degrees
 5" monitor with SD card recording/still image capture. With silicon





with Silicon Protective Cover

Other Versions:

HD4908

Wired with 3.0" LCD, powered by 4xAA batteries

HD4908-WiFi :

WiFi Version, APP operated supports both iOS and Android Phones

Cavity Wall Inspection Camera

4908AL (Upgraded Version with Sturdy 5" LCD)

This is a side view rigid inspection camera that is specially designed for cavity wall inspection, wall tie and dry rot inspection, inspection of spaces under floors, above ceilings and behind panels and ducts, and many more where a rigid side view endoscope is required.

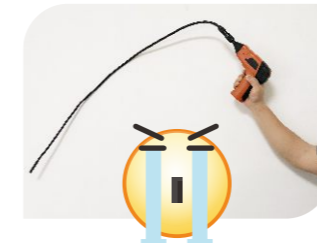
Features

- 2.4Ghz wireless transmission between camera and monitor
- Mini stainless steel insertion tube, dia.: 9mm
- Tube length 300mm
- Side view camera head, 380TVL
- 2 high intensity LEDs on camera head, providing light up to 1.5 meters
- Video out function
- 5" TFT-LCD wireless monitor with SD card recording (Max. SD card: 32GB)
- Waterproof level: IP67 (camera tube only)
- Built-in Rechargeable Li-battery for both camera and monitor

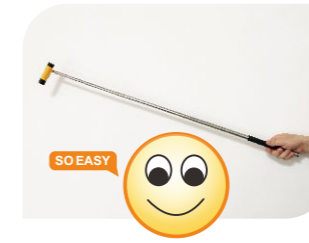
Multi-Purpose Mountable WiFi Video Borescope With 1m Telescopic Pole

TV80W

This is an innovative WiFi inspection camera that can be mounted on different rods and poles to get extended reach. It's built-in WiFi hotspot for using on both iOS and Android devices. It's perfect for a wide range of applications including locating electrical wiring, building inspections, home inspection, for aviation and vehicle applications and even for search and rescue missions.



Standard borescope with soft tube, hard to control directions



With 1m telescopic pole for any directions, no blind viewing angle.

